



AGAR GROVE

LONDON  
NW1 9UE

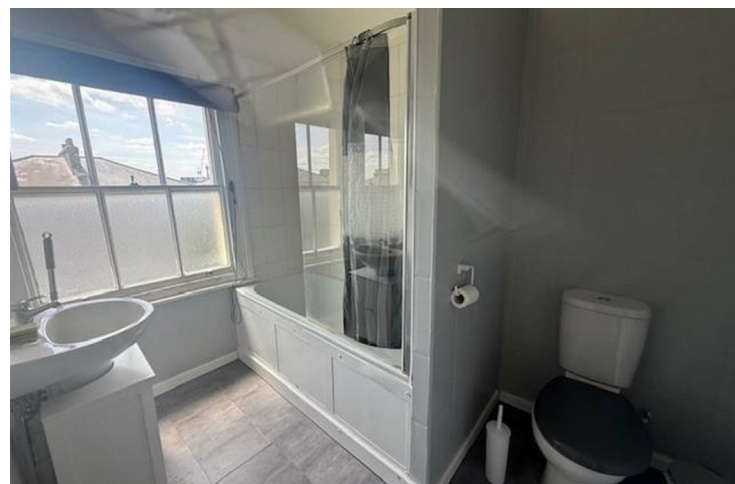
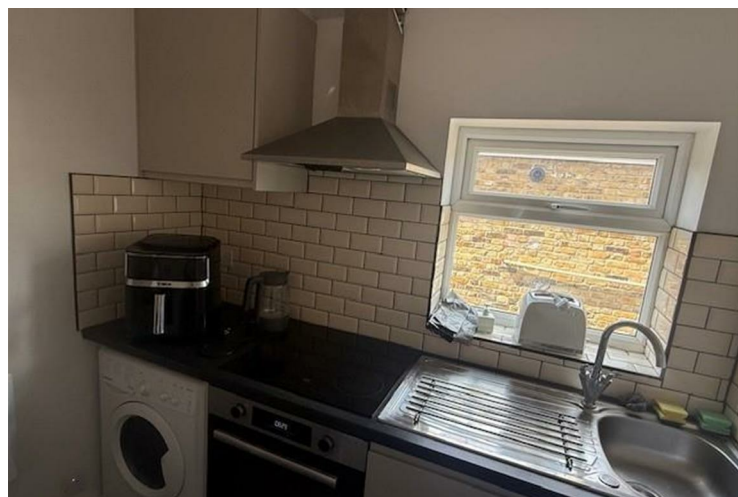
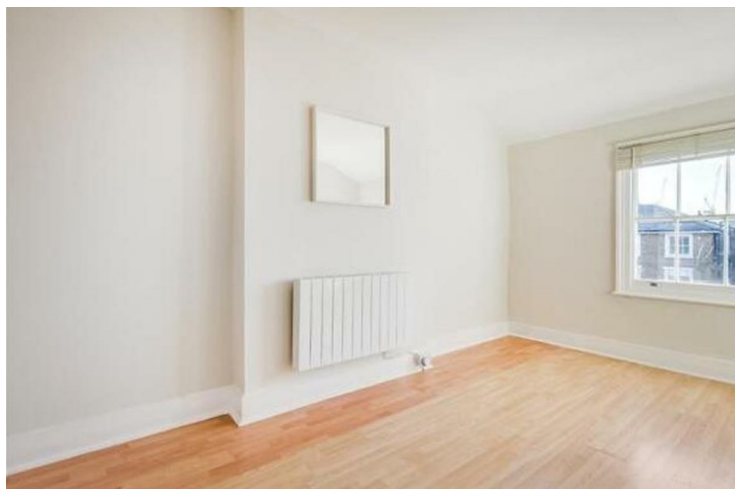
**PCM** £2,100 PCM  
SUBJECT TO CONTRACT

This recently refurbished one double apartment is situated on the top floor within this attractive period conversion.

The property comprises; reception room, separate modern kitchen, master bedroom and bathroom.

The apartment further benefits; wooden flooring, modern kitchen, ample storage and an abundance of natural light.

The property is offered part-furnished or furnished and available NOW.



## FEATURES

VIDEO TOUR:

SERVICE CHARGE: £

TENURE:

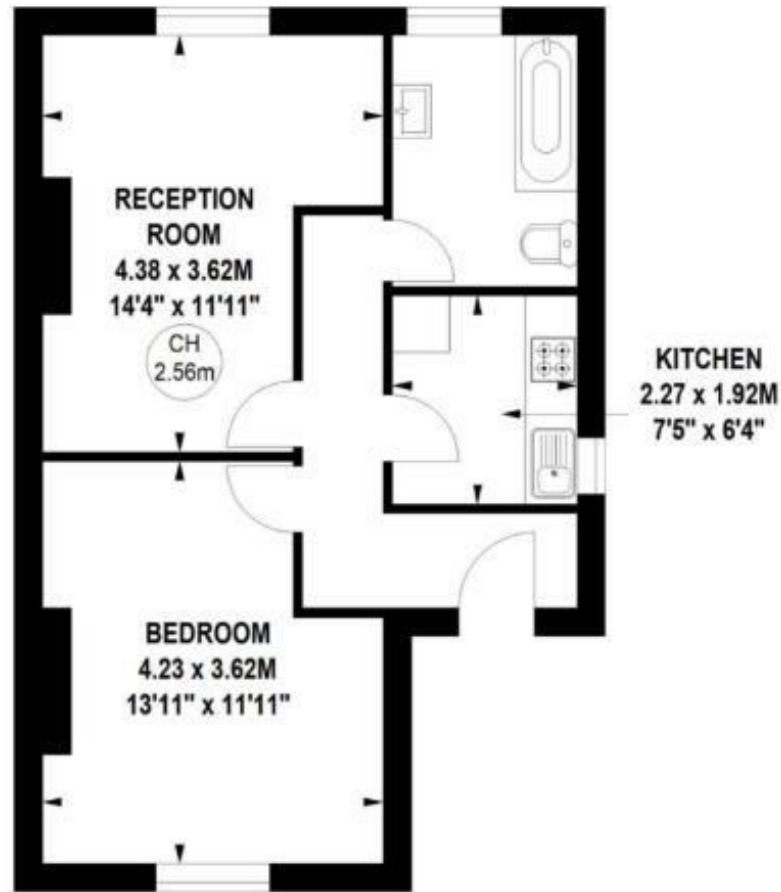
COUNCIL TAX: C

# Agar Grove, NW1

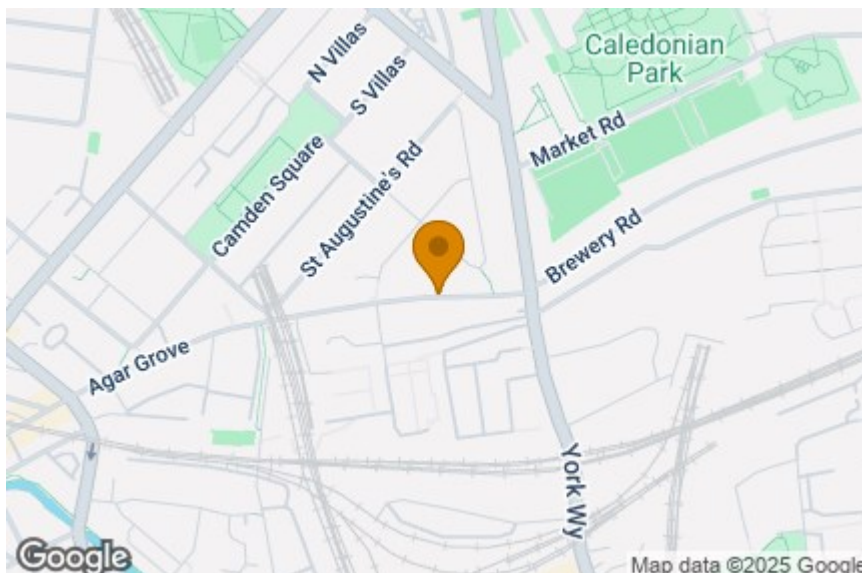
Approximate gross internal area

43.94 sq m / 473 sq ft

Key :  
CH - Ceiling Height



Second Floor



Energy Efficiency Rating		
	Current	Potential
Very energy efficient - lower running costs		
(92 plus) <b>A</b>		
(81-91) <b>B</b>		
(69-80) <b>C</b>		77
(55-68) <b>D</b>		
(39-54) <b>E</b>	45	
(21-38) <b>F</b>		
(1-20) <b>G</b>		
Not energy efficient - higher running costs		
England & Wales		
EU Directive 2002/91/EC		



## IMPORTANT NOTICE

Whilst every attempt has been made to ensure the accuracy of these details and floor plans contained here, measurements of doors, windows and rooms are approximate and no responsibility is taken for any error, omission or mis-statement. These plans and details are for representation only as defined by RICS code of measuring practice and should be used as such by any prospective purchaser.

Not to scale. Copyright: RHW Estates